



MONTHLY MEMBERSHIP PROGRESS REPORT

District 202 K

Results as of: 05/31/2018

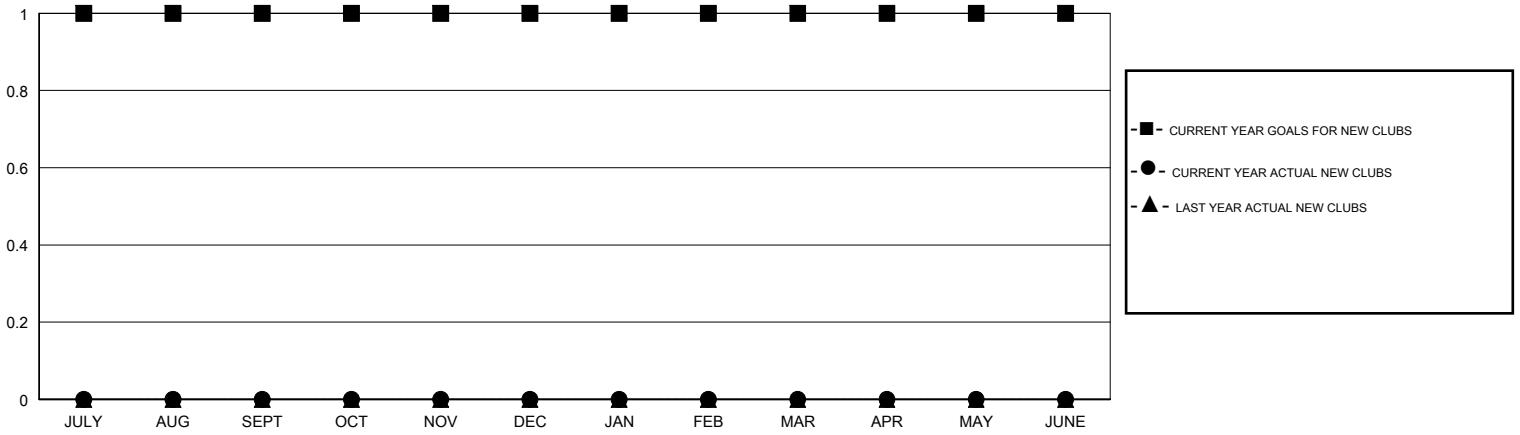
GMT: CLIFFORD HEYWOOD

LOCATION NEW ZEALAND

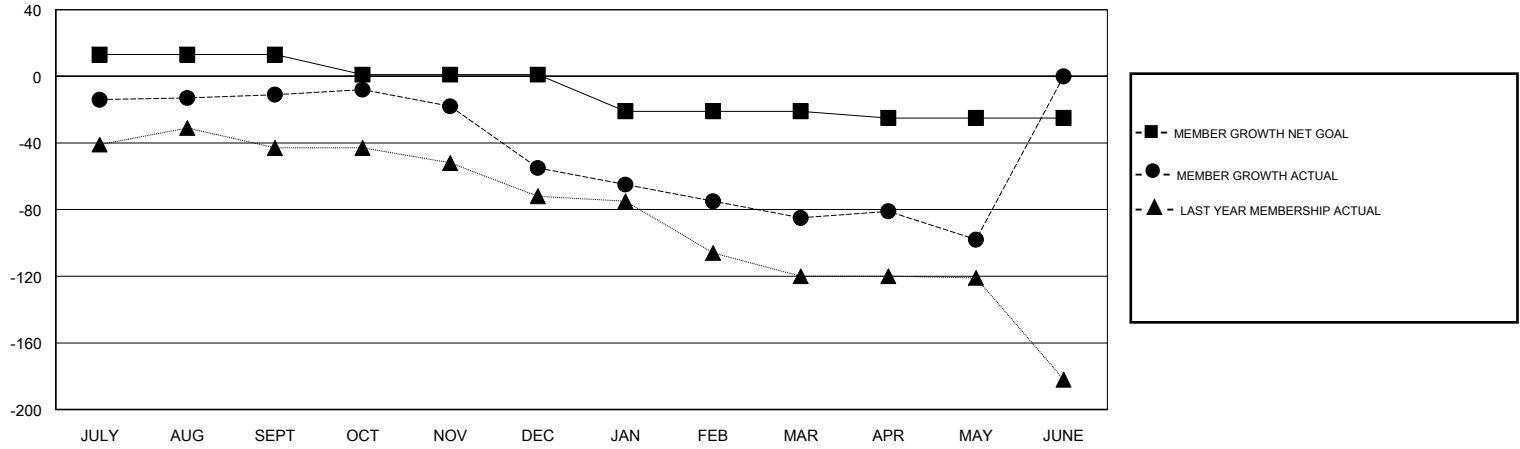
GMT CA

Clubs				Members			
RESULTS FOR 2017-2018				RESULTS FOR 2017-2018			
QUARTER	NEW CLUB GOAL	NEW CLUBS	DROPPED CLUBS	QUARTER	MEMBER GROWTH NET GOAL	MEMBER GROWTH ACTUAL	DROPPED MEMBERS ACTUAL (including transfers)
JULY/AUG/SEPT	1	0	2	JULY/AUG/SEPT	13	50	46
OCT/NOV/DEC	0	0	0	OCT/NOV/DEC	-12	48	83
JAN/FEB/MAR	0	0	0	JAN/FEB/MAR	-22	24	45
APR/MAY/JUNE	0	0	0	APR/MAY/JUNE	-4	36	40

GOALS AND ACTUAL NEW CLUBS CUMULATIVE



GOALS AND ACTUAL MEMBERS CUMULATIVE



DROPPED CLUBS: 2	43 CLUBS OF 77 ADDED 1 OR MORE NEW MEMBERS	<u>GENDER DISTRIBUTION</u>	
DROPPED MEMBERS		MALE	1,055 (68.73%)
DECEASED	22	FEMALE	480 (31.27%)
CLUB CANCELLED	0	Women Percentage Fiscal Year Goal: 33%	
OTHER	192	TOTAL FAMILY UNIT MEMBERS	206
TOTAL	214	FAMILY MEMBERS PAYING HALF DUES	104

[CLICK HERE FOR CUMULATIVE MEMBERSHIP DATA](#)